



ProFoldin

10 Technology Drive, Suite 40, Number 188

Hudson, MA 01749-2791 USA

Tel: (508) 735-2539 FAX: (508) 845-9258

www.profoldin.com

info@profoldin.com

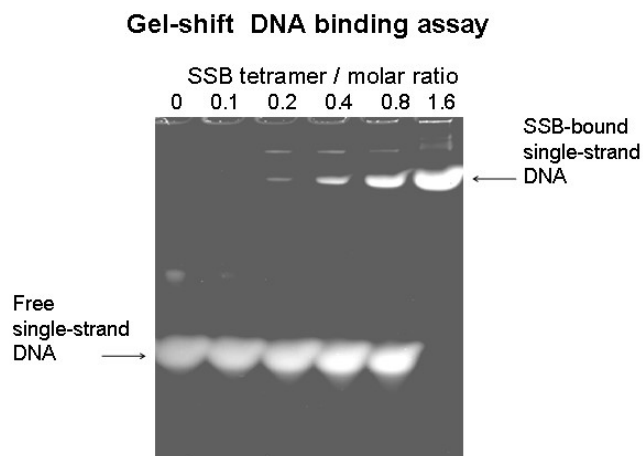
INSTRUCTIONS

ProFoldin Gel Shift Single-strand DNA Binding Assay

Gel Shift Single-strand DNA Binding Assay Kit
Gel Shift Single-strand DNA Binding Assay Kit Plus

Catalog No. GSSB100K
Catalog No. GSSB100KE

Single-strand DNA-binding protein (SSB) binds to single-stranded DNA (ssDNA) molecules or a single-stranded region of a double strand-DNA in a biological process such as DNA replication, recombination, or repair. For example, DNA helicase unwinds double-strand DNA to form single-strand DNA. *E. coli* SSB forms homotetramer; each subunit has a molecular weight of 19 kDa. The **Gel Shift Single-strand DNA Binding Assay** is designed for analysis of SSB DNA-binding activity using a conventional acrylamide electrophoresis. The SSB DNA-binding activity is visualized by the DNA band shift. The SSB-bound DNA migrates slower than the free DNA.



The **Gel Shift Single-strand DNA Binding Assay Kit (Catalog No. GSSB100K)** includes 150 μ l of 10 x Buffer, 150 μ l of 10 x ssDNA (a 45-mer single-strand DNA) and 100 μ l of 4 x gel loading buffer.

The **Gel Shift Single-strand DNA Binding Assay Kit Plus (Catalog No. GSSB100KE)** includes 150 μ l of 10 x Buffer, 150 μ l of 10 x ssDNA, 150 μ l of 2 mg/ml *E. coli* single-strand DNA binding protein SSB and 100 μ l of 4 x gel loading buffer.

Related Products:

Gel Shift Single-strand DNA Binding Assay kit

GSSB100KE

**ProFoldin**

10 Technology Drive, Suite 40, Number 188

Hudson, MA 01749-2791 USA

Tel: (508) 735-2539 FAX: (508) 845-9258

www.profoldin.cominfo@profoldin.com

INSTRUCTIONS

Human Topoisomerase I, 10,000 Units

Relaxed plasmid DNA - 0.050 mg

Supercoiled plasmid DNA - 0.050 mg

HTOPI-010

RDNA-050UG

SDNA-050UG

For more information of drug targets and protein products, please visit www.profoldin.com or send emails to info@profoldin.com.